

# 45.

SELECTED PEER REVIEW PROJECTS



## SELECTED PEER REVIEW PROJECTS

**Kalpataru Pinnacle – Mumbai, India**  
**Number of storeys: 30**  
**Completion Date: 2009**



**Neo Commercial Building – Mumbai, India**  
**Number of storeys: 12**  
**Completion Date: 2009**



**Queens – Singapore**  
**Number of storeys: 40**  
**Completion Date: 2001**



**The Icon – Singapore**  
**Number of storeys: 46**  
**Completion Date: 2005**



**Performance based evaluation of Ortigas Center – Manila, Philippines**  
**Number of storeys: 41**  
**Completion Date: 2017**



## SELECTED PEER REVIEW PROJECTS

**Emerald Bay Phase 2 – Johor Bahru, Malaysia**

**Number of storeys: 4**

**Completion Date: TBC**



**Enigma – Mumbai, India**

**Number of storeys: 64**

**Completion Date: 2016**



**Borivali Sky City Tower B – Mumbai, India**

**Number of storeys: 38**

**Completion Date: 2016**



**Havelock City – Colombo, Sri Lanka**

**Number of storeys: 46**

**Completion Date: 2019**



**Milan Mela – Kolkata, India**

**Number of storeys: N.A.**

**Completion Date: 2018**

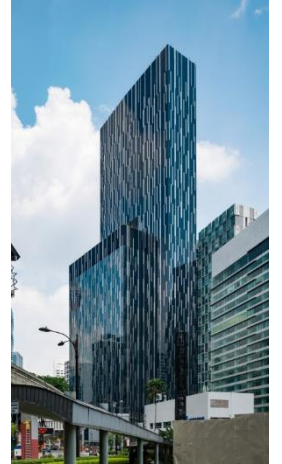


## SELECTED PEER REVIEW PROJECTS

### Standard Chartered Bank at Equatorial Plaza – Kuala Lumpur, Malaysia

Number of storeys: 52

Completion Date: 2019



### Ardmore – Singapore

Number of storeys: 25

Completion Date: 2017



### Peer review of structure for Exchange 106 – Kuala Lumpur, Malaysia

Number of storeys: 97

Completion Date: 2018



### Eternia Mulund – Mumbai, India

Number of storeys: 62

Completion Date: 2019



### Tardeo – Mumbai, India

Number of storeys: 62

Completion Date: 2019



All data contained in this information sheet is approximate and it is given in order to present a "feel" for the size and complexity of the projects featured. The information is not to be quoted or used for reasons other than assessing the track record and potential capability of Web Structures.